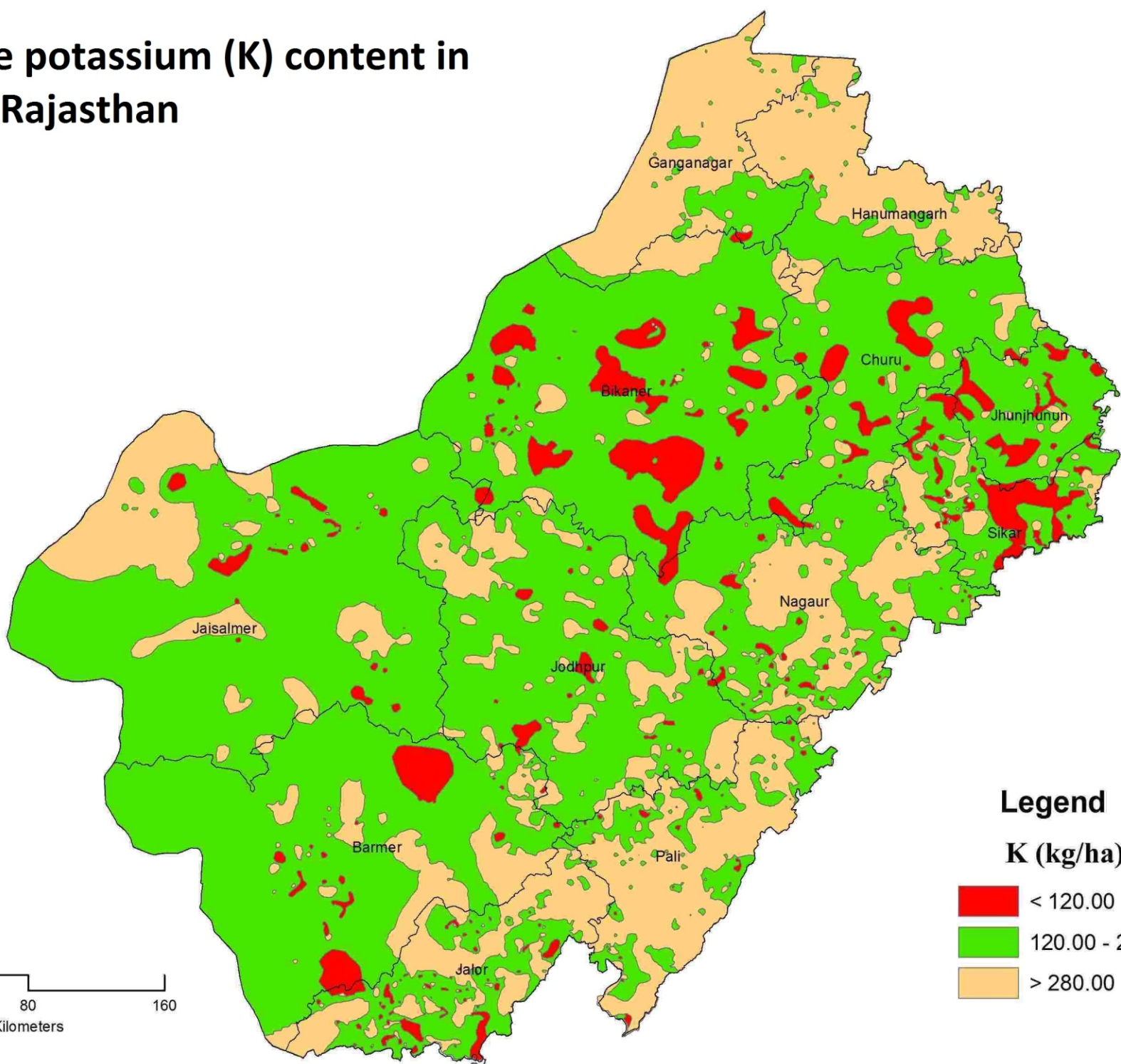


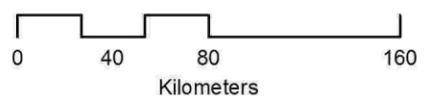
# Available potassium (K) content in hot arid Rajasthan



## Legend

**K (kg/ha)**

- < 120.00
- 120.00 - 280.00
- > 280.00



69°0'0"E 70°0'0"E 71°0'0"E 72°0'0"E 73°0'0"E 74°0'0"E 75°0'0"E 76°0'0"E

30°0'0"N  
29°0'0"N  
28°0'0"N  
27°0'0"N  
26°0'0"N  
25°0'0"N